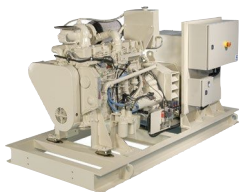


6B-CP C POWER MARINE GENSET



GENERAL SPECIFICATIONS

Engine Model	6BT5.9-D(M)
Alternator	STAMFORD UCM274E

PRIME POWER RATINGS

				FUEL CONSUMPTION		EMISSIONS		
kWe	kVa	Hz	Voltage	Rated L/hr (Gal/hr)	ISO Avg L/hr (Gal/hr)	IMO	EPA	EU
KC- and HX-cooled ratings								
80	100	50	380	22.4 (5.9)	11.3 (3.0)	—	—	—
			400					
			415					
99	124	60	416	27.1 (7.2)	14.0 (3.7)	—	—	—
			440					
			460					
			480					
RAD-cooled emergency ratings								
74	93	50	380	22.4 (5.9)	11.3 (3.0)	—	—	—
			400					
			415					
92	115	60	416	27.1 (7.2)	14.0 (3.7)	—	—	—
			440					
			460					
			480					

Ratings below 130 kW are not subject to IMO emission regulations.

For more information on average fuel consumption and emissions, refer to the Reference Materials section.

PRODUCT DIMENSIONS

		KC AND HX CONFIGURATIONS		RAD CONFIGURATION	
Length	mm (in)	2440	(88)	2320	(91)
Width	mm (in)	1250	(49)	1250	(49)
Height	mm (in)	1270	(50)	1280	(50)
Weight	kg (lb)	1270	(2800)	1370	(3020)

Dimensions may vary based on selected engine configuration.